

GULLEN RANGE WIND FARM



COMMUNITY UPDATE 3

APRIL 2014

Project Update

Construction of the Gullen Range Wind Farm is in the final stages of completion with:

- 61 wind turbines installed
- 33 wind turbines commissioned
- Footings established for all 73 turbines
- Access tracks formed to each of the turbine sites and electrical and control cables installed
- Substation constructed and commissioned and currently in use to operate the commissioned turbines
- Vegetation rehabilitation and reseeded progressing
- Upgrades to local roads arranged by GRWF in consultation with the relevant authorities

Construction of the GRWF is scheduled for completion in June 2014.

Section 75W Modification Application

Construction of the Gullen Range Wind Farm (GRWF) has been conducted in accordance with the approved Construction Environmental Management Plan (CEMP) and the Conditions of Project Approval granted by the NSW Land and Environment Court in August 2010.

Following selection of the wind turbine infrastructure and appointment of the project contractors, the wind farm's Final Design was developed through a comprehensive design review. The review took into account a range of factors that influence individual

wind turbine placement within the overall wind farm layout. Some of the Final Design locations of turbines have been subject to adjustment in order to minimise environmental impacts at turbine sites, maximise engineering benefits and ensure that social impacts for surrounding properties comply with the Project Approval.

To confirm the acceptability of the minor adjustments to turbine locations, Gullen Range Wind Farm Pty Ltd (GRWFPL) has submitted a Modification Application and Environmental Assessment, March 2014 (the Modification) to NSW Planning and Infrastructure (P&I). This seeks modification of the Project Approval under Section 75W of the Environment Planning & Assessment Act 1979 in respect of turbine locations and ancillary infrastructure.

Turbine location adjustments

The process of refining turbine locations following planning approval and prior to construction is a standard process in the implementation of most wind farm projects and was permitted under the Project Approval. This refinement of design is undertaken with the benefit of more engineering detail, additional site investigations, more detailed environmental mapping, detailed site review and analysis and the involvement of the contractors in the final design.

Turbine location adjustments for GRWF have included changes between zero and 187 meters with the average adjustment for the 73 turbines being 42 meters, to achieve a practical, efficient and compliant wind farm.

CONTACT US

For further information on the project please call the 24-hour toll-free GRWF Community Contact Line on 1800 509 711 or email info@gullenrangewindfarm.com

GULLEN RANGE WIND FARM – COMMUNITY UPDATE

The extent of changes in locations for individual turbines is shown in the enclosed map.

Each turbine relocation was assessed on an individual basis and took into consideration a range of design, construction and operational considerations, including positioning in relation to property and crown land boundaries, relevant environmental impacts and landowner preferences, as well as impacts for neighbouring properties and residence locations.

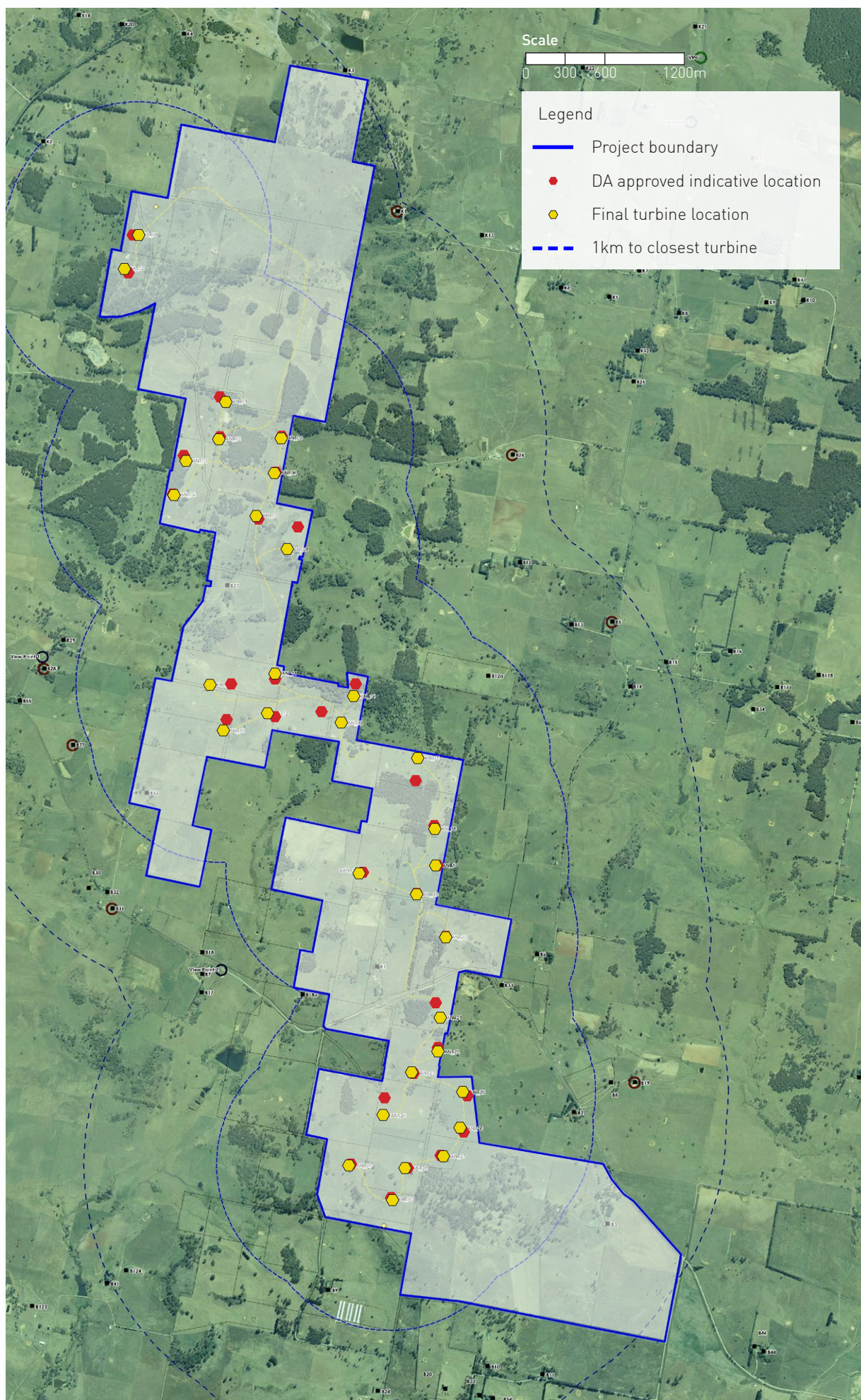
Consistency with the planning approvals

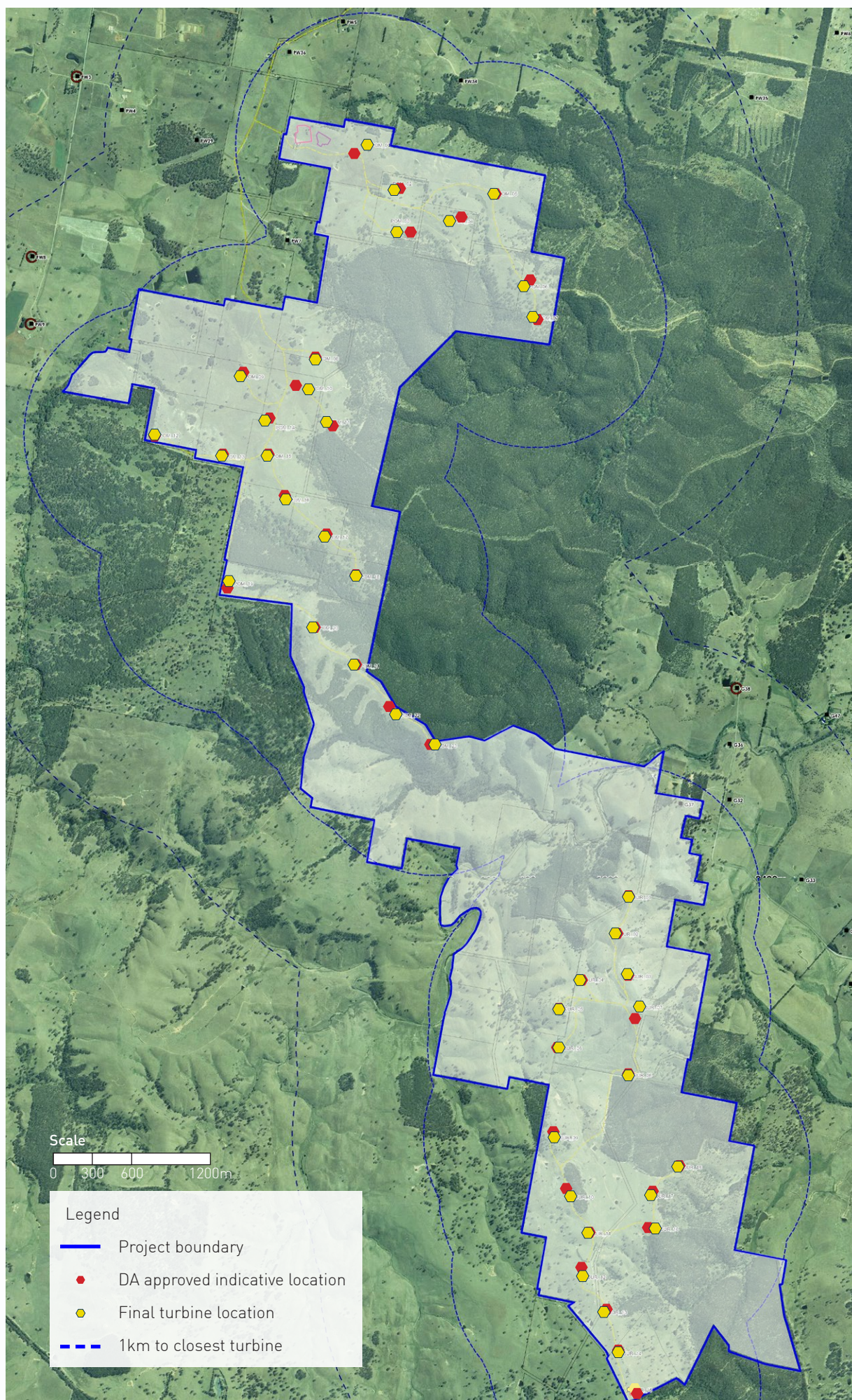
Turbine locations referred to by the approval documents prepared in 2008 and 2009 were always intended as 'indicative' locations only. Where possible, adjustments to turbine locations were minimised, however, where adjustments were required,

consistency reviews were undertaken. These reviews took into consideration engineering considerations and social and environmental constraints. These reviews were conducted by the P&I approved independent site Environmental Representative (ER) that is required to oversee environmental performance and compliance. GRWFPL sought the ER's advice prior to every turbine adjustment and followed the ER's direction during implementation.

Where the 'Final Design' location of turbines have been subject to minor adjustment, relocations are considered relatively minor and the Environmental Assessment conducted for the Modification concluded that they would not result in any significant increase in environmental or social impacts.







GULLEN RANGE WIND FARM – COMMUNITY UPDATE

Exhibition

The Modification will be on public exhibition until Friday 2 May 2014, during which time interested parties are invited to make a submission.

Display locations

The Modification Application is available to view on the GRWF webpage www.gullenrangewindfarm.com and in hard copy at the following locations:

- Planning and Infrastructure: Information Centre, 23-33 Bridge Street, Sydney
- Crookwell Library: Denison Street Crookwell
- Upper Lachlan Shire Council (Crookwell Office): 44 Spring Street, Crookwell
- Nature Conservation Council: Level 2, 5 Wilsons Street, Newtown

Have your say

GRWFPL values your feedback and welcomes all submissions on the Modification Application.

Please be advised that all submissions are treated as public documents and all information received, including names and addresses of respondents, may be published in subsequent assessment documents. If you do not want your details or components of your submission to be made public, please state this clearly in your submission.

Submissions must be made in writing and can be uploaded via the P&I website:

http://majorprojects.planning.nsw.gov.au/index.pl?action=view_job&job_id=6470

Alternatively you can send your submission via post to:

Atten: Toby Philp
Re: Submission - 07_0118MOD1
NSW Planning and Infrastructure
GPO Box 39
Sydney NSW 2001

Tips for writing a submission

There is no right or wrong way to make a submission and submissions can vary in length from letters to reports with supporting documentation.

Suggestions include:

- type your submission
- use double spacing
- use page numbering
- use headings
- if you have more than five pages, include a contents list and brief summary
- if you are representing an organisation, state this clearly and include relevant authorisation
- always keep a copy of your submission



GULLEN RANGE WIND FARM – COMMUNITY UPDATE

Next steps

Following exhibition of the Modification Application, GRWFPL will consider all submissions received and provide comments to P&I on the issues raised in a Submissions Report. The Submission Report prepared by GRWF would then be submitted to P&I for consideration. The Director-General, P&I will then prepare an assessment report and draft recommendations in respect of the Modification Application. The Consent Authority for this Modification Application is the NSW Minister for Planning and Infrastructure. The Minister may delegate determination of the Modification Application to the Planning Assessment Commission (PAC).

Contact us

Should you have any questions about the Modification Application process or the project please contact us:

Toll Free: 1800 509711

Email: info@gullenrangewindfarm.com

Write: GRWF, Level 23, 201 Elizabeth Street, Sydney, NSW 2000

www.gullenrangewindfarm.com



CONTACT US

For further information on the planned works please call the 24-hour toll-free GRWF Community Contact Line on **1800 509 711** or email info@gullenrangewindfarm.com