

**Gullen Range Wind Farm (GRWF) consists of 73 turbines that at full output will generate 165.5MW of electricity. It is in final stages of construction.**

**Landscape Screening Program**

GRWF is implementing a program of landscape screening on individual properties around the wind farm. This satisfies the approval conditions of the wind farm and aims to minimise the visual impact of the project on neighbouring properties.

Residences within three kilometres of the turbines are eligible for landscaping assessments.

Please consult the maps provided within this newsletter showing the three kilometre buffer. If you are unsure if your residence is within three kilometres please study these maps first.

Individual landowners can choose whether to participate. If you are interested and have not already contacted GRWF, please do so via the contact details below. The Lot and DP number for your dwelling (as found on the council rates notice) are used to check eligibility, so please have these ready when you contact us.

GRWF has engaged local landscape architects, Fresh Landscape Design. Following registration and an eligibility check, an on-site inspection will be arranged with landowners and Fresh Landscape Design to consult on preferred screening options.

Landscape screening measures will likely consist of tree planting in strategic locations to screen views of the turbines from the house. The location, plant species and timing will be discussed with each interested landowner and the preferred option recorded in a landscape plan. After approval, the work will be done by landscape contractors organised by GRWF.

**Modification Application Process**

In our last newsletter we provided an update on the application process for Modification of the Project Approval (MP 07\_0118 MOD 1). The modification seeks approval of the locations of the

turbines in a practical, efficient arrangement that is compliant with the objectives and requirements of the Project Approval.

Since the last newsletter, the DPE has released the Secretary's Environmental Assessment Report and associated recommendations. The documents are on the DPE website: <http://majorprojects.planning.nsw.gov.au>

DPE has now referred the modification application to the Planning and Assessment Commission (PAC). The PAC is independent of the NSW Government, the Minister for Planning and the Department of Planning and Environment. Certain applications are delegated to the PAC by the Minister and the PAC will make the final determination of the Application.

The PAC will consider the DPE Assessment Report and hold a public meeting. The public meeting is scheduled for the 5th of September at Crookwell RSL Services Club, 127 Goulburn Street, Crookwell. Further information is available on the PAC website: <http://www.pac.nsw.gov.au>

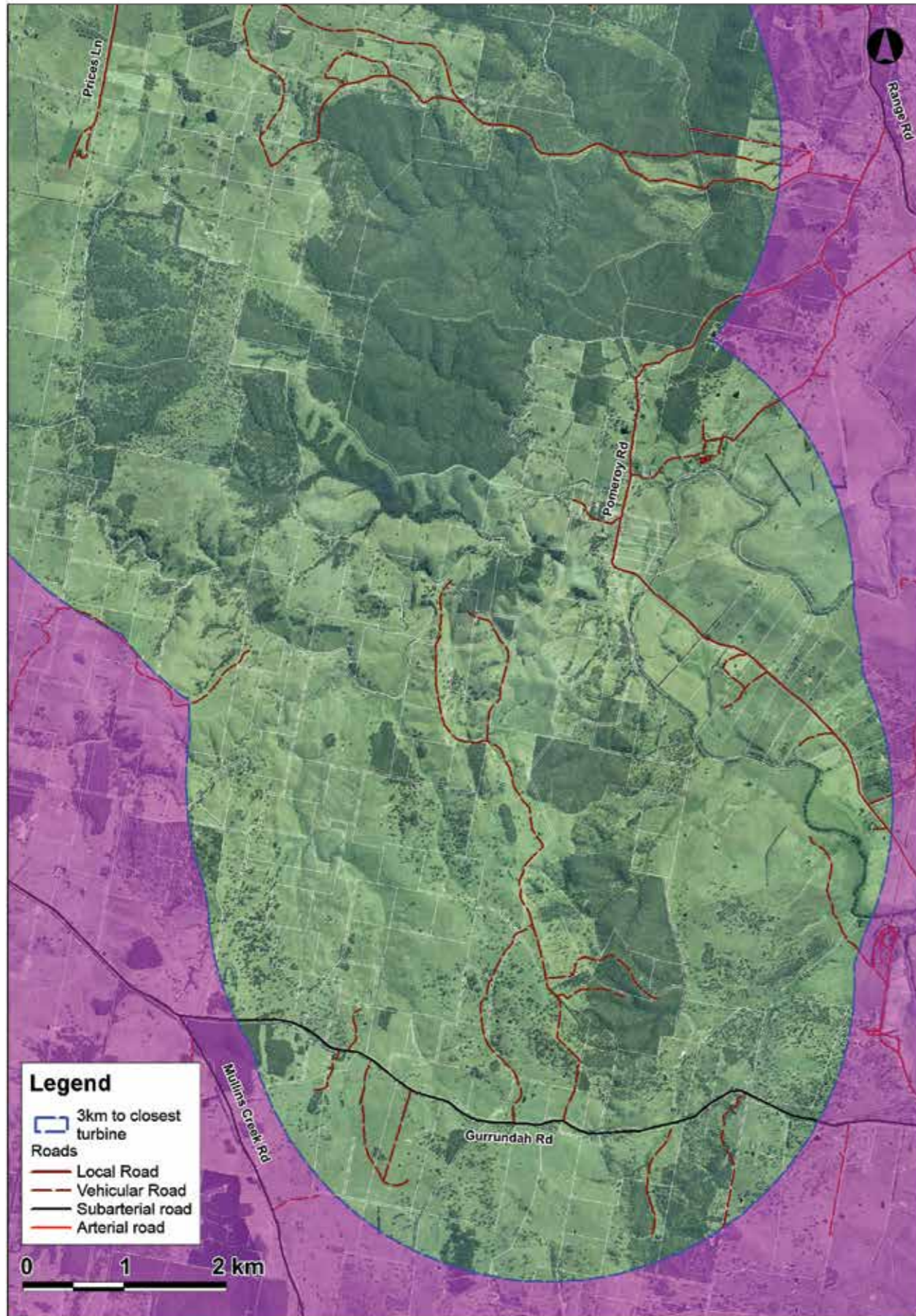
**Road Repairs**

GRWF is committed to meeting our obligations to repair dilapidation of Range Road that was caused by the wind farm construction traffic. Agreement has been reached with Upper Lachlan Shire and discussions are ongoing with Goulburn Mulwarre Councils to agree the works.

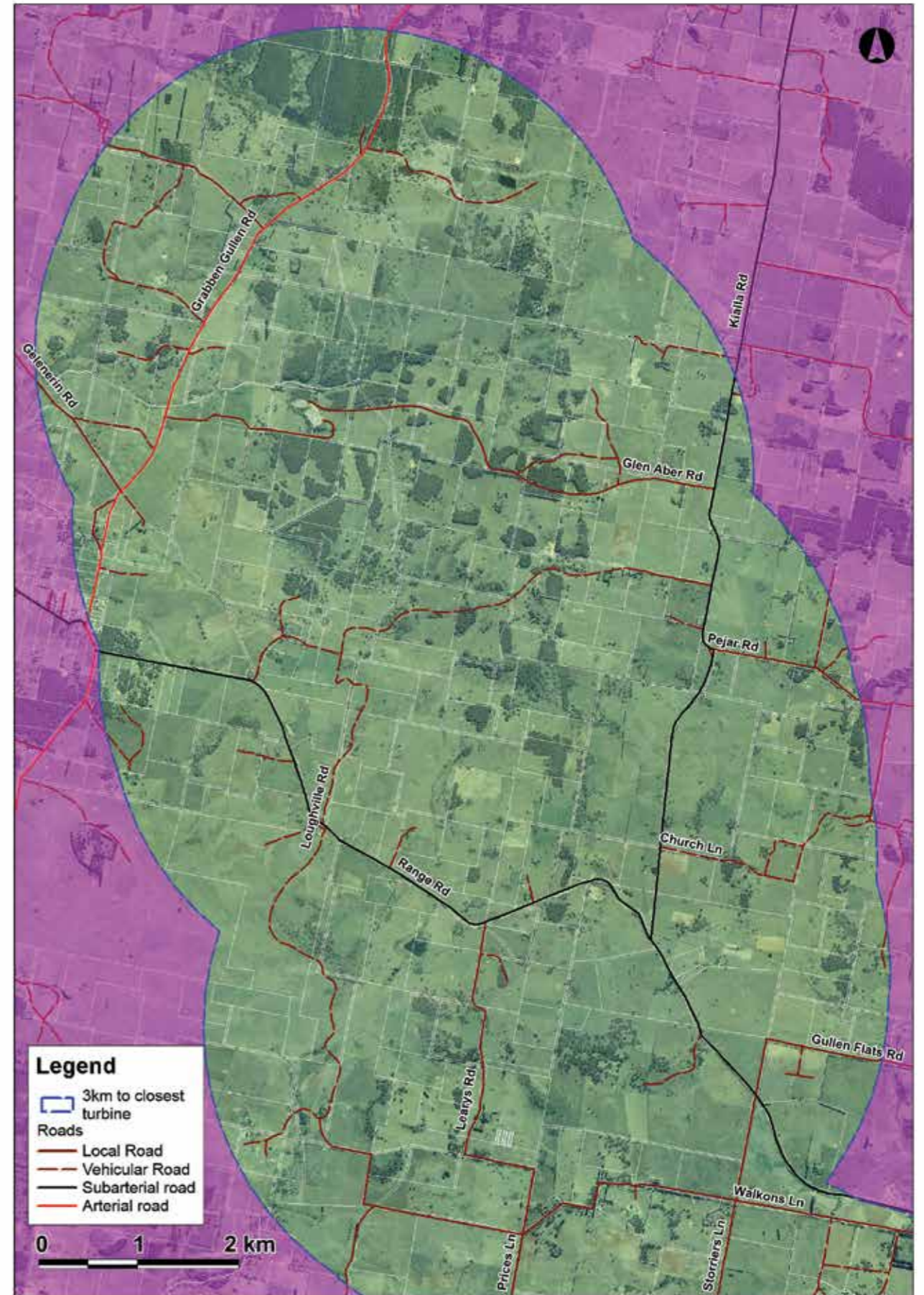
ULSC have informed GRWF that weather conditions are currently not favourable to successful road works; therefore it's likely the works will be carried out in Spring.

**Construction Program**

GRWF is in the final stages of construction. Over the next two months, the remaining construction activities are planned to be completed with final turbines erected and commissioning carried out. Completing construction will enable GRWF to commence Operational Noise Compliance Monitoring and the Community Enhancement Program. The DPE Environmental Assessment Report concluded, in relation to the final turbines to be erected, an insignificant change in wind turbine noise and the change in the visual impact was not discernible.



GULLEN RANGE WIND FARM – LANDSCAPE SCREENING PROGRAM  
Gurrundah Area



GULLEN RANGE WIND FARM – LANDSCAPE SCREENING PROGRAM  
Bannister Area